

# ECP26ZX

## CONCRETE PUMPS / BOOM PUMPS

G.V.W(Gross Vehicle Weight) : 14.7ton



\* Weight and dimension figures here are subject to change on various chassis option and additional axle application etc.

### BOOM

Folding type	4-section Z-folding
Max. vertical reach	25.2m
Max. horizontal reach	21.8m
Max. depth reach	15.2m
Unfolding height	6m
Slewing angle	360deg.
End hose length	3m
Delivery pipe dia.	125mm

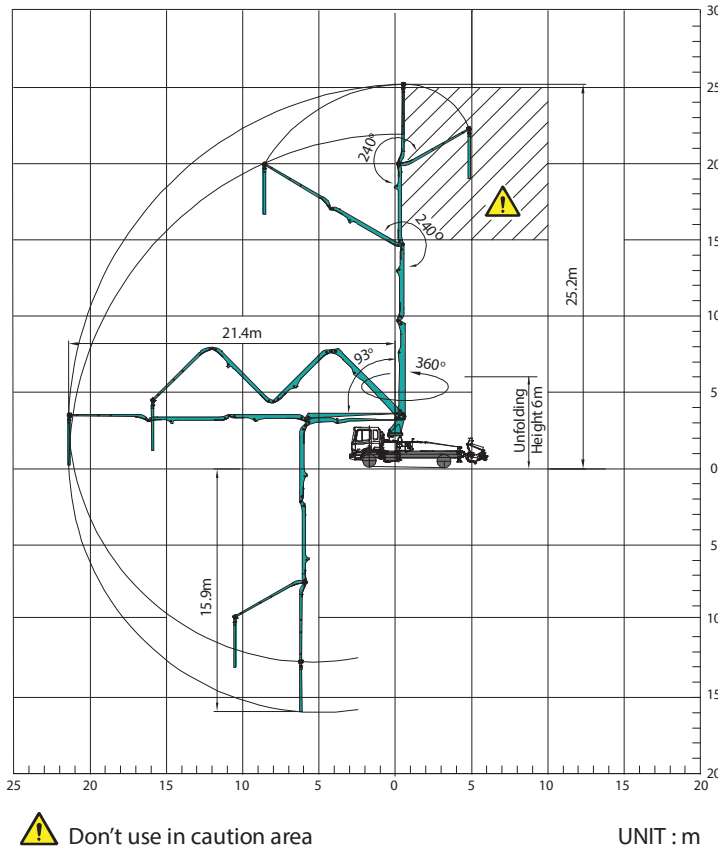
### PUMP

Pump cell	1409	1412
Control system	Closed Free Flow Hydraulic	
Main pump	A4VG125	A4VG180
Concrete cylinder (mm)	200x1,400	230x1,400
Strokes No.(per min.)*	35	33
Concrete output(m³/h)*	90	120
Concrete pressure(bar)*	70	70
Transfer tube type	S-Tube, S2018 (Dia. 200-180mm)	
Volume of hopper (liter)	400	400

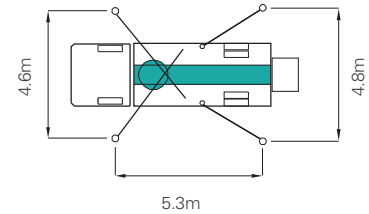
\*Rod side. Output & pressure are theoretical data.

# EVERDIGM

## WORKING RANGE

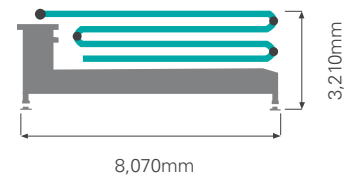


## OUTRIGGER SPREAD



Front outrigger type	X(Diagonal) Extension
Rear outrigger type	Swing-out

## UPPER BODY DIMENSION



## FEATURES & SUPPLY SCOPE

Inductive proximity switch with indicator	Flushing water pump(30bar)
Single lip concrete piston	Water tank (300L)
Hard-chromed concrete cylinders	Spray nozzle with 15m hose
Outrigger pilot check valves	Auto lubrication system for hopper
Greasing port on boom link and pedestal	Tungsten carbide for wear ring and plate
Working light on pedestal	Flap elbow(180-150mm) with cleaning port
Aluminum platform(non-skid)	Reducing pipe(150-125mm)
Bubble gauge on both side	Agitator motors on both side hopper
	Working light on hopper

## OPTIONS

- Twin wall pipe line
- Safety(oss) system
- Working light on boom
- Auto-lubrication for boom and pedestal
- Hopper cover
- Central manual lubrication for hopper
- Safety device for hopper
- Vibrator on hopper grid
- Stainless hand rail
- Auxiliary fuel tank on one side rear outrigger
- Customized color

\*EVERDIGM reserves the right to make changes to specifications and supply scope. Specifications and supply scope are subject to change without prior notice.

# EVERDIGM



### HEAD OFFICE & FACTORY

49, Buyeong-gil, Jincheon-eup, Jincheon-gun, Chungcheongbuk-do, Korea (27844)  
TEL +82-1588-0758 FAX +82-43-530-3318

### SALES & MARKETING OFFICE

Room#1203, WoolimLion's Valley2, 2 Gasan digital 1-ro, Geumcheon-gu, Seoul, Korea (08591)  
TEL +82-2-801-0700 FAX +82-2-801-0799 E-mail angelica@everdigm.com