

# ECP21ZX

## CONCRETE PUMPS / BOOM PUMPS

G.V.W(Gross Vehicle Weight) : 13.4ton



\* Weight and dimension figures here are subject to change on various chassis option and additional axle application etc.

### BOOM

Folding type	4-section Z-folding
Max. vertical reach	20.2m
Max. horizontal reach	16.8m
Max. depth reach	11.8m
Unfolding height	5m
Slewing angle	360deg.
End hose length	2.5m
Delivery pipe dia.	100mm

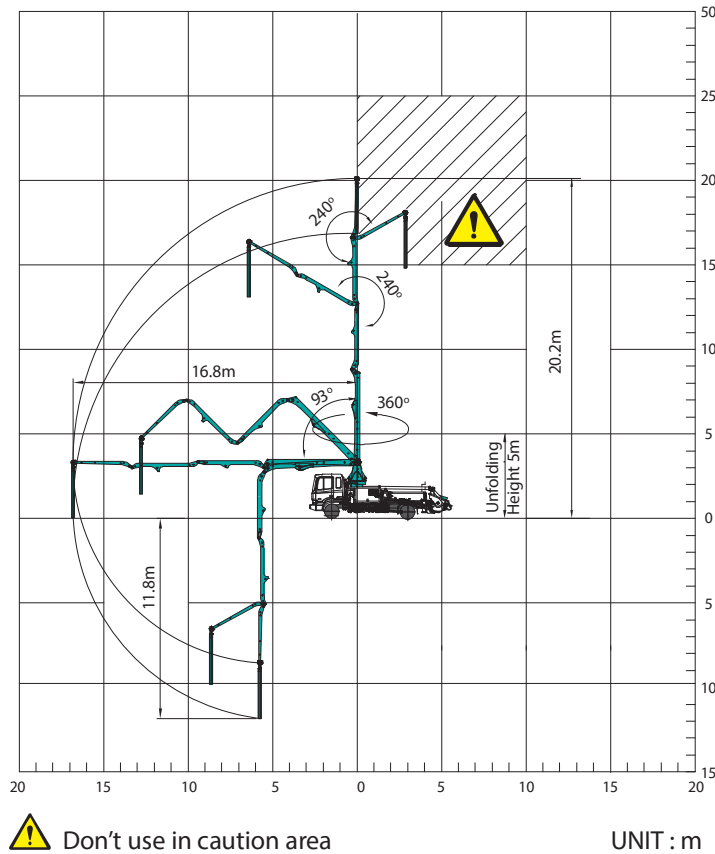
### PUMP

Pump cell	1208
Control system	Closed Free Flow Hydraulic
Main pump	A4VG125
Concrete cylinder (mm)	200x1,200
Strokes No.(per min.)	36 (rod) / 24 (piston)
Concrete output(m³/h)*	81 (rod) / 54 (piston)
Concrete pressure(bar)*	71 (rod) / 106 (piston)
Transfer tube type	S-Tube, S2012 (Dia.200-125mm)
Volume of hopper (liter)	400

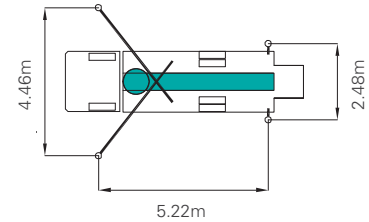
Output & pressure are theoretical data.

# EVERDIGM

## WORKING RANGE

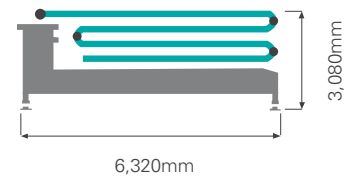


## OUTRIGGER SPREAD



Front outrigger type	X(Diagonal) Extension
Rear outrigger type	Jack cylinder

## UPPER BODY DIMENSION



## FEATURES & SUPPLY SCOPE

Inductive proximity switch with indicator	Flushing water pump(30bar)
Single lip concrete piston	Water tank (400L)
Hard-chromed concrete cylinders	Spray nozzle with 15m hose
Outrigger pilot check valves	Auto lubrication system for hopper
Greasing port on boom link and pedestal	Tungsten carbide for wear ring and plate
Working light on pedestal	Flap elbow(150-125mm) with cleaning port
Aluminum platform(non-skid)	Reducing pipe(125-100mm)
Bubble gauge on both side	Agitator motors on both side hopper
	Working light on hopper

## OPTIONS

Twin wall pipe line
Safety(loss) system
Working light on boom
Auto-lubrication for boom and pedestal
Hopper cover
Central manual lubrication for hopper
Safety device for hopper
Vibrator on hopper grid
Stainless hand rail
Auxiliary fuel tank on one side rear outrigger
Customized color

\*EVERDIGM reserves the right to make changes to specifications and supply scope. Specifications and supply scope are subject to change without prior notice.

# EVERDIGM



### HEAD OFFICE & FACTORY

49, Buyeong-gil, Jincheon-eup, Jincheon-gun, Chungcheongbuk-do, Korea (27844)  
TEL +82-1588-0758 FAX +82-43-530-3318

### SALES & MARKETING OFFICE

Room#1203, WoolimLion's Valley2, 2 Gasan digital 1-ro, Geumcheon-gu, Seoul, Korea (08591)  
TEL +82-2-801-0700 FAX +82-2-801-0799 E-mail angelica@everdigm.com