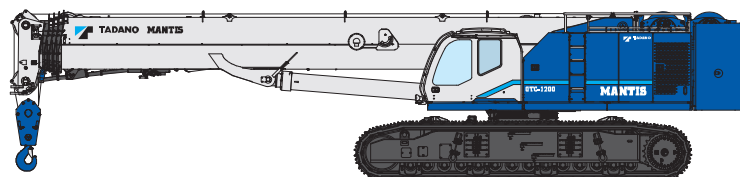


GTC-1200



MACHINE WEIGHTS	
STANDARD CRANE with 5 section - 47.2 m boom, 900 mm triple bar semi-grouser track shoes, auxiliary winch with wire rope, 2 pcs 4.535 t carbody counterweight, 18 m 2-staged bi-fold jib, 12.5 t headache ball	86,927 kg
Counterweight 10.59 t (configuration A)	10,590 kg
Counterweight 5.3 t x 2 (configuration B)	10,600 kg
Counterweight 5.3 t x 2 (configuration C)	10,600 kg
Auxiliary boom head	135 kg
120 t hook block	1,024 kg
64 t hook block	588 kg
STANDARD CRANE with 5 section - 47.2 m boom, auxiliary winch with wire rope (Counterweight and track frames removed)	48,292 kg
Track frame (left)	13,710 kg
Track frame (right)	13,710 kg
Counterweight 10.59 t (configuration A)	10,590 kg
Counterweight 5.3 t x 2 (configuration B)	10,600 kg
Counterweight 5.3 t x 2 (configuration C)	10,600 kg
Counterweight, carbody 4.535 t x 2	9,070 kg
2-staged bi-fold jib (3.8 m / 10.2 m / 18 m)	1,946 kg
2-insert jib (7 m x 2)	954 kg
Auxiliary boom head	135 kg
120 t hook block	1,024 kg
64 t hook block	588 kg
12.5 t headache ball	199 kg



 Lifting your dreams

TADANO MANTIS Corporation
1705 Columbia Avenue, Franklin, Tennessee 37064, U.S.A.
Phone: +1-800-272-3325 Fax: +1-615-790-6803
<http://www.mantiscranes.com/> E-mail: sales@mantiscranes.com

TADANO LTD. (International Division)
4-12, Kamezawa 2-chome, Sumida-ku Tokyo 130-0014, Japan
Phone: +81-3-3621-7750 Fax: +81-3-3621-7785
<http://www.tadano.com/> E-mail: info@tadano.com



GTC-1200-1-E-15-9-02-83-507-B2
Printed in Japan



TELESCOPIC BOOM CRAWLER CRANE

GTC-1200

120 METRIC TON CAPACITY

TELESCOPIC
BOOM
CRAWLER
CRANE



MANTIS®
CRANES

REFINED HEAVY DUTY CONCEPT

TADANO MANTIS cranes are engineered like no other. Massive steel fabrications and powerful diesel engines matched to state of the art hydraulics and controls make this crane ideal for both lift applications as well as rugged heavy duty work.



**Strong lifting capacity
in the 120t class**

CONTENTS

BENEFITS OF TELESCOPIC BOOM CRAWLER CRANES	02
PRODUCT CONCEPTS	03 - 04
PRODUCT FEATURES	05 - 09
OPTIONAL ITEMS	10
WORK APPLICATION	11 - 12

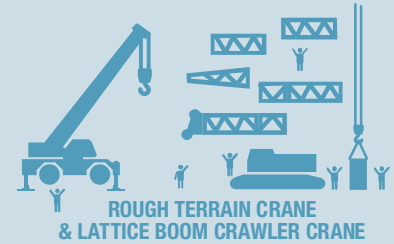
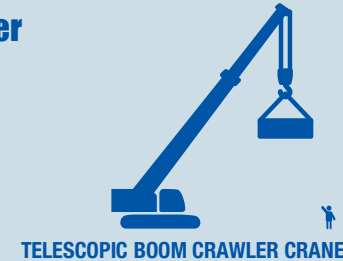
GTC-1200

Crane capacity: 120 t at 3.0 m
Main boom: 5-section, 12.8 m - 47.2 m
2-staged bi-fold jib: 3.8 m / 10.2 m / 18.0 m
2-staged bi-fold jib & 2-insert jib: 25.0 m / 32.0 m *

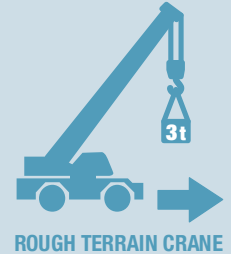
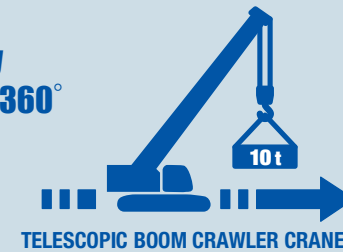
*Optional

BENEFITS OF TELESCOPIC BOOM CRAWLER CRANES

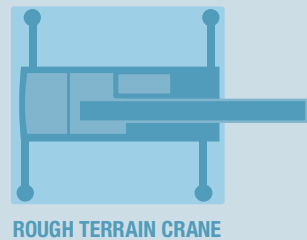
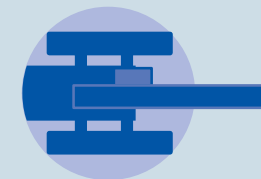
Quick & Safer Set Up



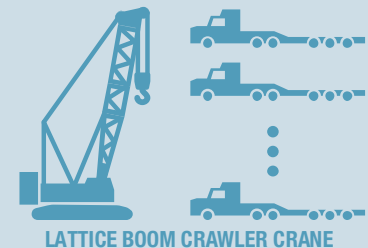
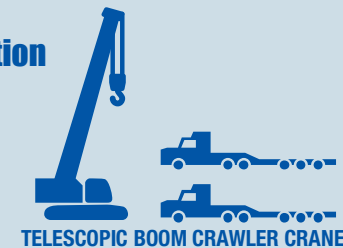
Maximum Pick & Carry Capacity at 360°



Compact Work Dimension Low Ground Bearing Pressure



Less Transportation Costs



TADANO

MANTIS[®]
CRANES

REFINED HEAVY DUTY

Benefits obtained from our "Refined Heavy Duty" product concepts:

- Pick & Carry the load on uneven and rough terrain around 360 degrees slew conditions
- Pick & Carry the load with track in retracted position*
- Telescope under full load lifting capacity
- Use of foundation attachments such as vibratory hammer**
- Many added features for safety and operator usability

*Counterweight needs to be installed.

**TADANO MANTIS Guideline for piling extraction using vibratory hammer needs to be followed.

Tough & Durable Design

Less electronic components and simple control system. Class exceeding larger boom sections and boom head, stronger telescopic cylinder.



Long Boom and Enhanced Lifting Capacity

Longer boom and enhanced lifting capacity were achieved while retaining the heavy duty boom structure and the 'Genuine Pick and Carry Design'.

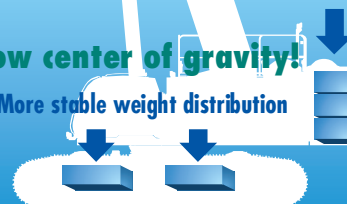
Proven Genuine Pick & Carry Design

Good weight balance and low center of gravity. (Approx. 10% less dependent on counterweight with weight transferred to the undercarriage.)

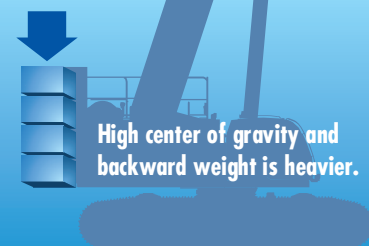
Weight dispersion

Low center of gravity!

More stable weight distribution

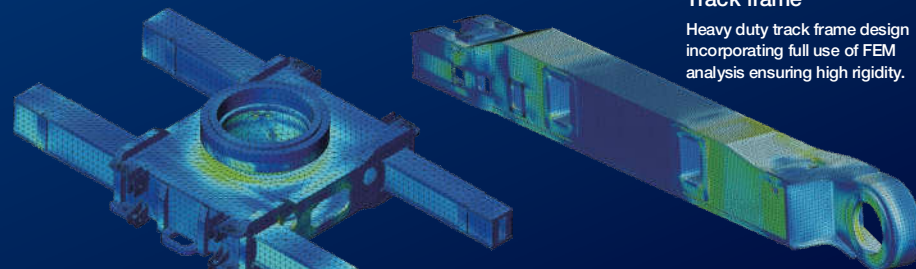


High center of gravity and backward weight is heavier.



Track frame

Heavy duty track frame design incorporating full use of FEM analysis ensuring high rigidity.



Carbody frame

Heavy duty rugged carbody frame with strong track extension cylinders.

Designed to allow foundation attachment and high gradeability

Powerful engine and pump.
Powerful track drive motor.

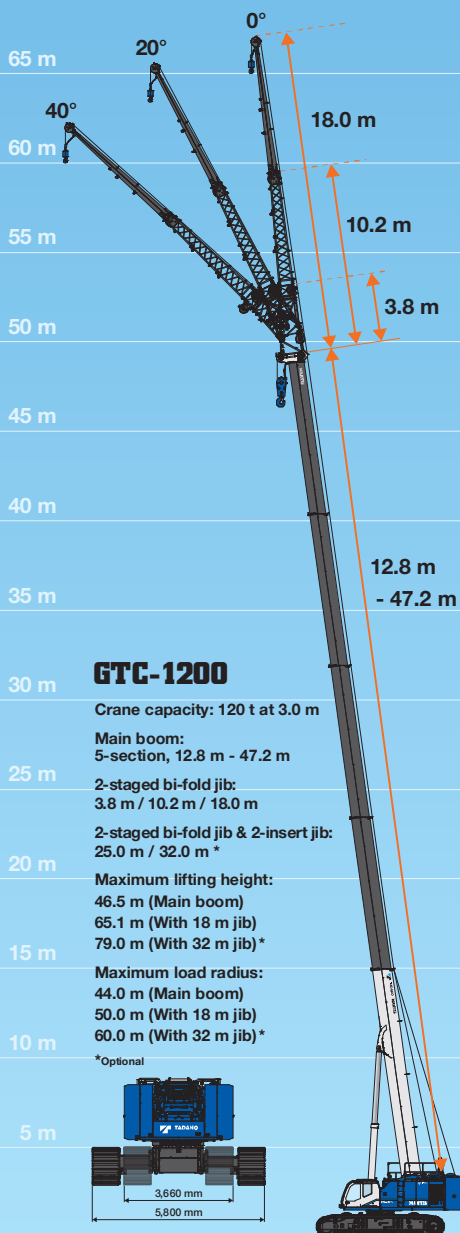


Photo: TIER IV Final version

Safety and Easy-To-Use Functions

Incorporates many highly evaluated safety and easy-to-use functions from other Tadano rough terrain and all terrain crane models.

PRODUCT FEATURES



GTC-1200

Crane capacity: 120 t at 3.0 m

Main boom:
5-section, 12.8 m - 47.2 m

2-staged bi-fold jib:
3.8 m / 10.2 m / 18.0 m

2-staged bi-fold jib & 2-insert jib:
25.0 m / 32.0 m *

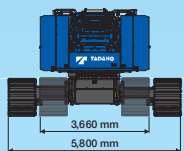
Maximum lifting height:

46.5 m (Main boom)
65.1 m (With 18 m jib)
79.0 m (With 32 m jib) *

Maximum load radius:

44.0 m (Main boom)
50.0 m (With 18 m jib)
60.0 m (With 32 m jib) *

* Optional



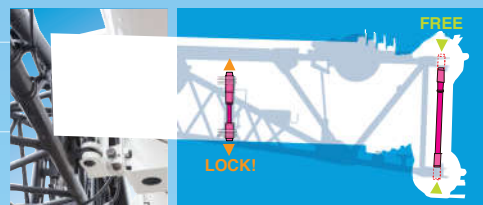
Assist Cylinders for Jib

When mounting and stowing the fly jib, two assist hydraulic cylinders ensure safe and efficient operation.



Jib Interlock System

Interlock jib pinning system ensures safer and quicker jib mounting and stowing procedure.



The pivot pin that holds the jib to the boom is part of the interlocking system.

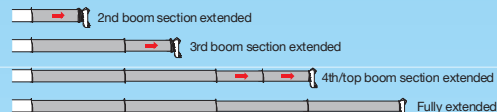
Two Telescoping Mode

Boom sequence mode "I" offers strong lifting chart for lifting with a short working radius such as pick & carry and foundation jobs. Boom sequence mode "II" offers a substantial increase in lifting capacity with a long working radius.

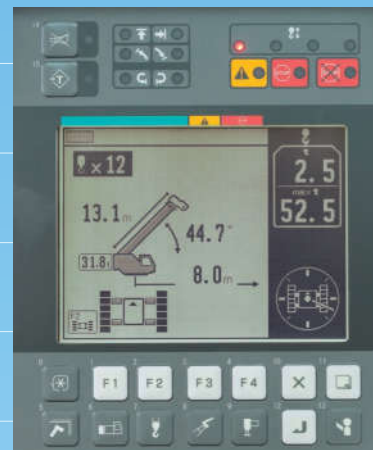
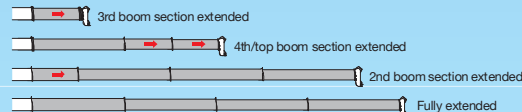


Telescoping status screen

Telescoping mode I



Telescoping mode II



Load Moment Indicator [AML-C]

AML-C allows the operator to simultaneously monitor: boom angle, boom length, operating pressure of the elevating cylinder, crane inclination angle, track extension width, counterweight configuration, slewing position, rated lifting capacity and present hook load. With the crane inclination angle provided while operator is travelling under the load, AML-C provides the corresponding rated lifting capacity on the screen.

The work range limit function and slow stop function assist the operator to slowly stop boom elevation and slewing motion when the crane approaches the pre-registered boom angle (upper limit, lower limit), lifting height and load radius.



AML lamp

Operator Comfort

The spacious crane cab and simple controls offer a more comfortable and functional working environment.

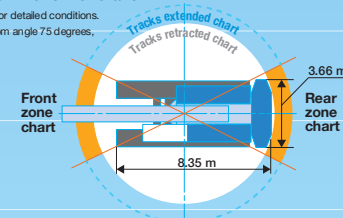


Front and Rear Zone Lifting Chart*

Even under the tracks in retracted position, GTC-1200 provides the same tracks extended chart for front and rear zone lifting areas. Thus, from the compact work dimension of just only 3.66 m tracks in retracted overall width and working length of 8.35 m (track and counterweight length)**, GTC-1200 performs as the most compact 120 tonner crane.

* Please see load charts for detailed conditions.

** Condition under the boom angle 75 degrees, fully retracted

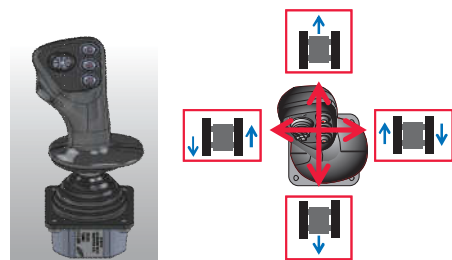


Tiltable Cab



Travel Mode

Select travel mode by either using the touch screen or pushing a button on the control screen, right joystick acts as a travel controller for improved operability.



360° Positive Slewing Lock

Operator can lock the slewing brake at any desired position from the cab.



Maintenance Reminder Function

Operator can preset the maintenance reminder function on the control screen by selecting the required maintenance items and engine hours from 50 hours up to 2,000 hours.



Auto Engine Idle Mode

Operator can present the engine speed at any desired rpm by dial switch. When auto engine idle mode is ON, engine will run at low idle speed until a function is activated, then engine will increase to preset rpm. After all controls are returned to neutral, engine speed will return to low idle speed. This function eases the operator's fatigue of stepping on the pedal and improves the operability.



Winch and Rear/Side View Color Monitor



Winch page, monitor display



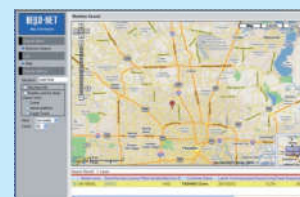
Rear view page, monitor display



Side view page, monitor display

HELLO-NET System

HELLO-NET System is an Internet-based crane management system capable of simultaneously monitoring crane location and operating conditions. Service areas differ according to individual countries.



Monitoring machine information from your computer

1. Work History

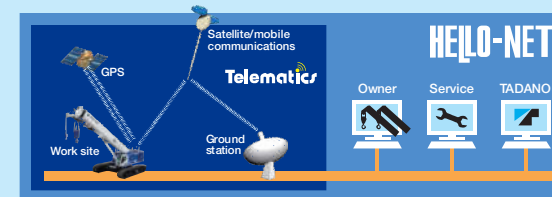
HELLO-NET Owner's Site displays the day-to-day operational status, mileage and remaining fuel for each machine equipped with a communication terminal. In addition, you can view a list displaying the number of hours of operation and the mileage of all your machines for any specified month.

2. Machine Position Data

Using HELLO-NET Owner's Site, you can check a machine's latest position (up until the previous day) on a map. Two types of position data are transmitted automatically from your machine once a day. Work Site: The location where the machine engine has been activated (for one hour or more). Position at Day's End: The final location data from the GPS which was received on a given day.

3. Maintenance Information

You can check the maintenance timetable of your machines for periodical replacement parts and inspection schedule. HELLO-NET supports the maintenance of your machine.

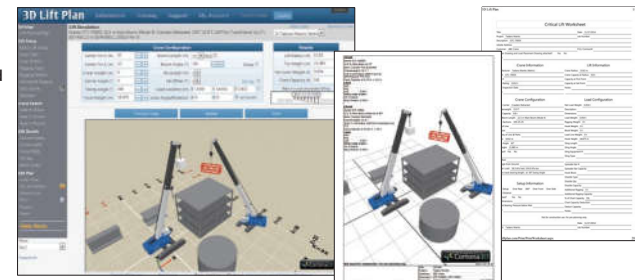


Telematics (machine data logging and monitoring system) with HELLO-NET via internet (*availability depends on countries). Details: The availability of data communications systems, such as satellite or mobile communications differ according to individual countries. There are some countries where the system itself is not in use. For details, please contact your distributor or our sales staff.

3D Lift Plan*

Customize 3D lift simulation at your fingertips for FREE**. Easy access and user friendly webpage allows you to calculate crane configurations and ground bearing pressure simultaneously. Moreover, you can print out detailed configurations and 3D graphics to further support your work preparation.

*3D Lift Plan is a product of A1A Software LLC.
**Advanced customize functions will be extra.

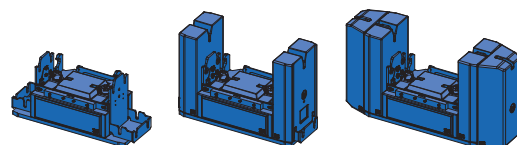
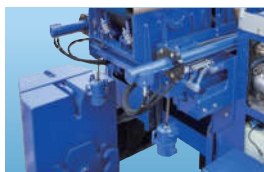


Self-removable counterweight

Counterweight can be hydraulically installed/removed by operating remote controller without the need of a support crane.



Remote Controller
Counterweight, carbody jack, assist cylinders for jib, emergency backup operation



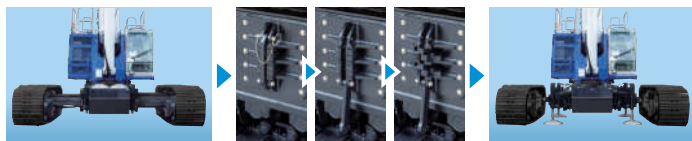
Configuration "A" 10.6 t Configuration "B" 21.2 t Configuration "C" 31.8 t

Three counterweight configurations can be selected.



Easy Track Frame Removal System

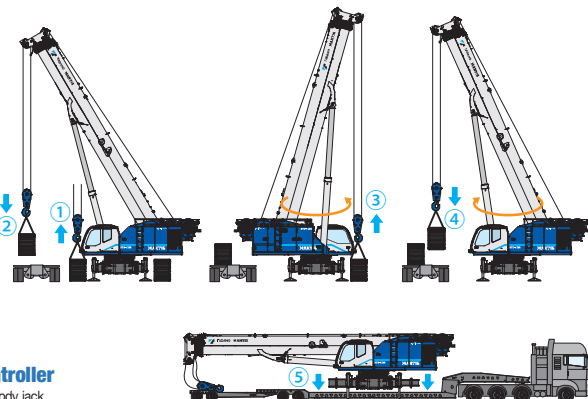
Track frames and track extend beams can be easily unlocked and locked without the need of tools or heavy lifting by our patented system.



Hydraulic quick coupling system for track motor hydraulic connections



Remote Controller
Track beams, carbody jack



Two powerful winches with cable follower

Two powerful winches with cable follower, drum rotation indicator and 3rd wrap indicator.



3 Rotation Work Lights

Light angle can be adjusted by 360° degrees horizontally and 135° degrees vertically from the crane cab.



Control switch



Access Steps



Wide Access Walkways



Wide Hand Rails and Steps



Tool Box

Large 297 liter capacity tool box



OPTIONAL ITEMS

Work Platform (Approved country only)

Work platform can be fitted to the boom head. It is all steel construction with self-leveling platform and position lock pin. By selecting Work Platform Chart, permissible operating range will be monitored by the load moment indicator. It is equipped with a DC hydraulic back-up pump integrated into the crane system.



- Size: 914 mm x 1,828 mm
- Maximum load capacity: 340 kg



Steel Flat Shoes

Substitute steel flat shoes for standard triple bar semi-grouser shoes.

Anemometer

Boom or jib mounted wireless anemometer with digital display in cab. It also provides alarm and warning message in the display.

WORK APPLICATION

**Powerline Transmission
& Construction**



Wind Energy



Barge



Mining



**Foundation
& Foundation Support**

